



ELIT

Multi-clamp V2A Ø810 mm

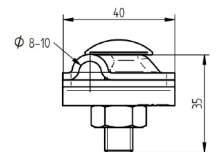
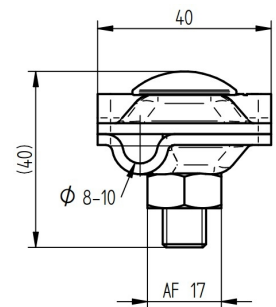
Multi-clamp in stainless steel Ø810 mm

Technical description

Multi-clamp in accordance with DIN EN 62561-1 for universal use as a T-clamp, cross-clamp, parallel clamp, and joint connector. All parts, including the M10 screw, are made of stainless steel (V2A). Provides excellent contact through consistent clamping. Fits conductors Ø8 - 10 mm.

Advantages:

Only one clamp for all types of wire connections
Maximum contact through consistent clamping
Short installation time - only one M10 screw
Made of stainless steel (V2A)
Fits conductors Ø8 - 10 mm



Product name/ Art.nr/ GTIN	ELIT KRYSSKLEM-V2A-Ø8-10mm/ 40180029/ 7070810031023
According to:	EN 62561-1
Type of connector	T-/cross-/parallel connector
Diameter round conductor 1	8 - 10 Millimetre
Material	Stainless steel 304 (V2A)
Surface protection	Untreated
Type of fastening screws	Clamp screw